



## 1 Pennine Road, Chorley, PR6 0AW

£800 Per month

Highgate Homes is pleased to present this charming end-terrace house available to let on Pennine Road, Chorley. This well-presented property boasts a generous 1,087 square feet of living space, making it an ideal choice for those seeking comfort and convenience.

The house features two inviting reception rooms, perfect for entertaining guests or enjoying quiet evenings at home. With two spacious bedrooms, there is ample room for relaxation and rest. The property, built in 1900, combines character with modern living, ensuring a delightful atmosphere throughout.

One of the key advantages of this home is its excellent location. Situated close to the motorway, commuting to nearby towns and cities is made easy, making it a great option for professionals. Additionally, the property is fully double glazed, providing energy efficiency and a cosy environment all year round.



## Exterior



Located on Penine Road in Chorley

## Kitchen



A oartially timed well presented kitchen

## Reception



A large sized family reception room

## Bedroom 1



A decent sized double bedroom

## Reception 2



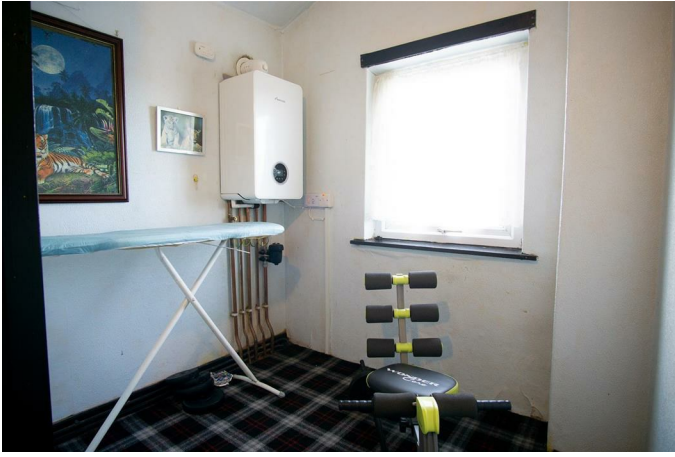
A second large sized reception room

## Bedroom 2



A second decent sized double bedroom

## Boiler room



A boiler room

## Bathroom



A partially tiled bathroom which is well presented and has a corner shower

## Rear yard



A rear yard with a storage shed

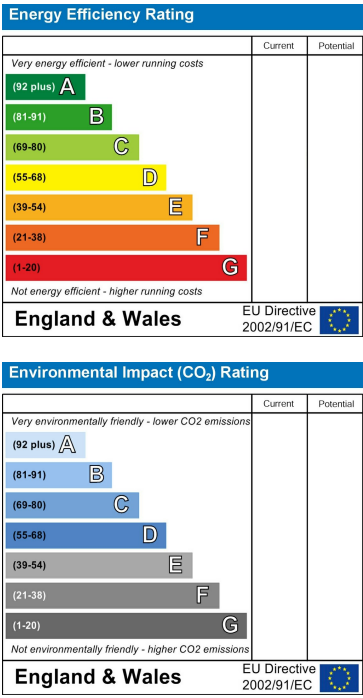


Floor Plan

Area Map



Energy Efficiency Graph



These particulars, whilst believed to be accurate are set out as a general outline only for guidance and do not constitute any part of an offer or contract. Intending purchasers should not rely on them as statements of representation of fact, but must satisfy themselves by inspection or otherwise as to their accuracy. No person in this firms employment has the authority to make or give any representation or warranty in respect of the property.